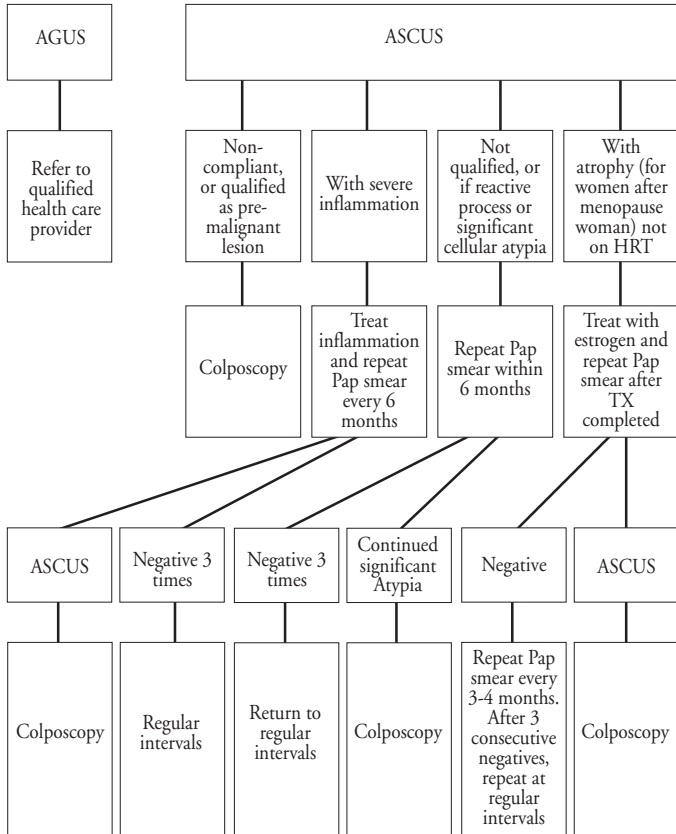
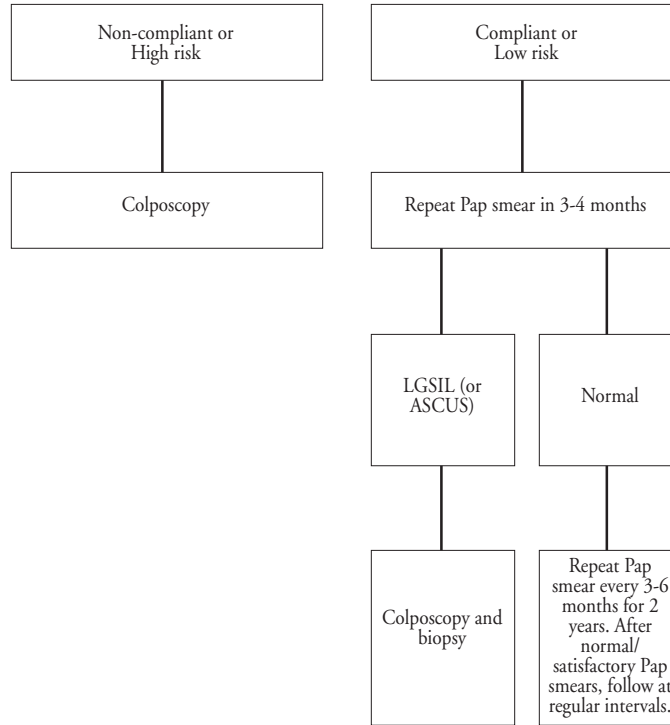


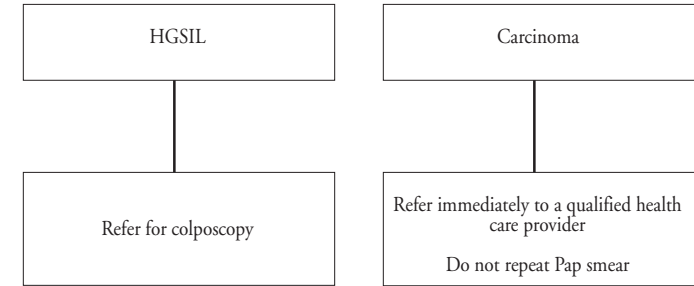
Atypia



LGSIL/HPV

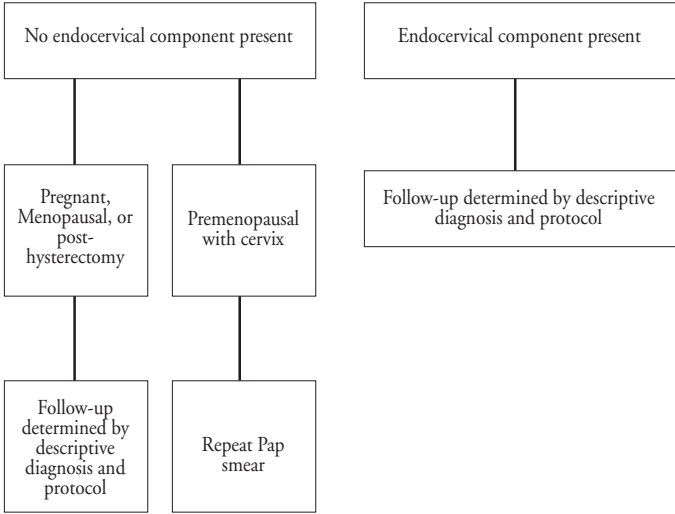


HGSIL and Carcinoma



Pap Smear Terminology Comparison Chart		
Expected Histology	Bethesda System	CIN System
Unknown	Unsatisfactory (Reason Given)	Unsatisfactory
Normal	Within Normal Limits Benign Cellular Changes: Infection, Reactive Change	
Squamous Metaplasia		
Atypia Squamous Metaplasia	Atypia (ASCUS) (AGUS)	
Mild Dysplasia	Low Grade SIL: HPV Mild Dysplasia	CIN1
Moderate Dysplasia	High Grade SIL: Moderate Dysplasia	CIN2
Severe Dysplasia		Severe Dysplasia CIS
Carcinoma In Situ (CIS)	Squamous Cell Carcinoma Adenocarcinoma	CIN3
Invasive Cancer		

Adequacy of Pap Smear



Benign Cellular Changes

